



## WFL Association of School Support Personnel

# The Supporter

June 2016

### Officers

President: Donna Arno

1st Vice President: Susan  
Cristantello

2nd Vice President: Amy Owens

Secretary: Gail Gligora

Treasurer: Diane Smith



## General Meeting

Tuesday, June 14, 2016 there is a general meeting. It is at the Newark American Legion at 3:30.

There will be voting on 2nd Vice President, Treasurer, and Delegate positions.

There will also be voting on the 2016-2017 Budget for the Association.

We will also have the following presenters:

Jason Carter about the Constitutional Convention

Kathy Hines from ERS

There may be a few others that are still in the works.

The Association will be doing two door prize drawings for \$50 WalMart gift cards. Can't win if you are not there. There will be raffles for a lottery ticket board and a wine basket.

We look forward to seeing you there!

Have a great rest of the school year!

### **Inside this issue:**

General Meeting	1
Disability Insurance	2
Proposed Budget	2
Web Page	2
Voting Ballot	3
Running for Office	3
Member Benefits	4

## Disability Insurance

If you currently have UNUM Disability Insurance, please make sure that you update your information with them regularly. If you do not update your information your benefit will be based on the salary you made at the time you originally enrolled.

UNUM is now working with NYSUT Member Benefits as well. If you are currently enrolled directly with UNUM, it is recommended that you not

change your policy. If you are not currently enrolled you can contact NYSUT Member Benefits to do so.

You also have disability options through AFLAC and can enroll during the open enrollment periods. All disability insurance plans are at your discretion and not required.

Also, It is now our understanding that if you have been a member of the Employee Re-

tirement System for ten years or more that, if you were to become permanently disabled you would be able to collect a disability benefit from the ERS.



## Proposed 2016—2017 Association Budget

President's Stipend	\$2,500	Postage	\$1,500
1st Vice President Stipend	\$650	Mileage/Reimbursements	\$1,500
2nd Vice President	\$650	Refreshments & Rent	\$200
Treasurer/Membership	\$650	Donations & Gifts	\$100
Secretary	\$650	Miscellaneous	<u>\$100</u>
Building Reps	\$2,400	<b>Grand Total</b>	<b>\$14,000</b>
Workshops/Conferences	\$4,000		
Office Supplies	\$300		

## WE HAVE A NEW WEBPAGE!

It has been some time coming, but we now have a new webpage for our Association. The link is: <http://wflassp.ny.aft.org/>

We have been working very hard at communicating with our mem-

bers and have listened to your suggestions. You can now find the Executive Items from our monthly meetings on our webpage under "Publications and Reports" on the "News" tab.

Our webpage is constantly being updated and we welcome any suggestions you may have. Contact your Building Representative with any pertinent suggestions and information.



# Voting Ballot

## 2<sup>ND</sup> VICE PRESIDENT

Amy Owens [ ]

## TREASURER

Diane Smith [ ]

## DELEGATES

Donna Arno [ ]

Susan Cristantello [ ]

Gail Gligora [ ]

Amy Owens [ ]

Diane Smith [ ]

## PROPOSED BUDGET (\$14,000)

Yes [ ]

No [ ]



# Running for Office

My name is **Diane Smith** and I have been the W-FL Support Union treasurer for the past three years. Also as a delegate of the union, I have attended many conferences and workshops to continually learn more. I enjoy being involved with the Union.

I also served two terms as secretary for the union and as building rep at the Finger Lakes Technical and Career Center. I have also served on negotiating committees.

I am currently in my twenty-second year as the guidance secretary at the Finger Lakes Technical and Career Center.

I am very involved in organizations and fellowships outside of BOCES. I have served many positions within those organizations and fellowships, including treasurer on both a local and district level.

I feel honored to be nominated for re-election by my peers for the position of treasurer. I will continue to do my very best in the position, knowing I have their support.



Please contact Billie Brinkerhoff if: ([bbrinkerhoff@edutech.org](mailto:bbrinkerhoff@edutech.org))

- ♦ You have anything that is newsworthy in your districts.
- ♦ You have something that you would like answered about the contract.
- ♦ You have information that would help everyone.

We are looking for items to put in the newsletter and on the website.



## **Save with NYSUT Member Benefits**

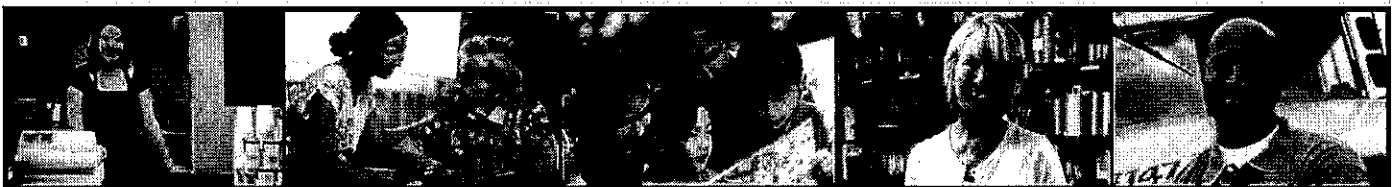
The NYSUT membership is made up of a variety of diverse professionals -- joining together in support of those who depend on them. We salute these men and women for their dedication and the sacrifices they make on a daily basis to help improve the lives of others.

And we are proud to offer you -- the hard-working NYSUT member -- an opportunity to participate in the more than 40 endorsed programs & services offered by NYSUT Member Benefits.

Look to Member Benefits for crucial insurance programs such as auto, homeowners, life, disability, or long-term care insurance. Member Benefits also offers a variety of travel, entertainment & shopping options to help you with everything from daily purchases to those special once-in-a-lifetime excursions.

The following is just a sampling of the endorsed programs & services available to NYSUT members & their families:

- Homeowners Insurance
- Auto Insurance
- Legal Service Plan
- Financial Counseling Program
- Life Insurance
- Vision Plan
- ID Watchdog
- PayCheck Direct
- Car & Truck Rentals
- Wyndham Hotels
- Endless Vacation Rentals
- Buyer's Edge, Inc.



To learn more about Member Benefits-endorsed programs & services, visit ***memberbenefits.nysut.org*** or call **800-626-8101**.



For information about contractual endorsement arrangements with providers of endorsed programs, please contact NYSUT Member Benefits. Agency fee payers to NYSUT are eligible to participate in NYSUT Member Benefits-endorsed programs.